

426 PALM AVENUE

MILLBRAE, CA 94030



Palm Ave

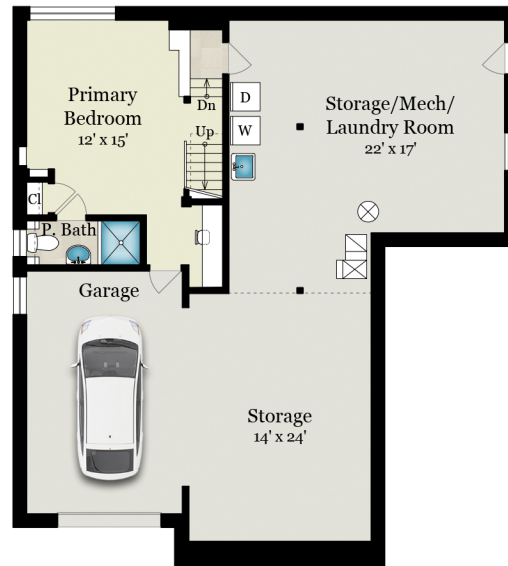
MAIN LEVEL

1,405 SQ FT

Estimated Total Finished Square Footage: 1,755 SQ FT

Above-Grade: 1,405 SQ FT Below-Grade: 350 SQ FT
Plus 270 SQ FT Garage on Lower Level
Plus 790 SQ FT Storage/Mech/Laundry Room on Lower Level
Calculated per ANSI Standard Z765-2003.

* Estimated Total Finished & Unfinished Square Footage: 2,815 SQ FT



LOWER LEVEL

350 SQ FT - Finished
1,060 SQ FT - Unfinished

