

10 TULIP COURT

BURLINGAME, CA 94010

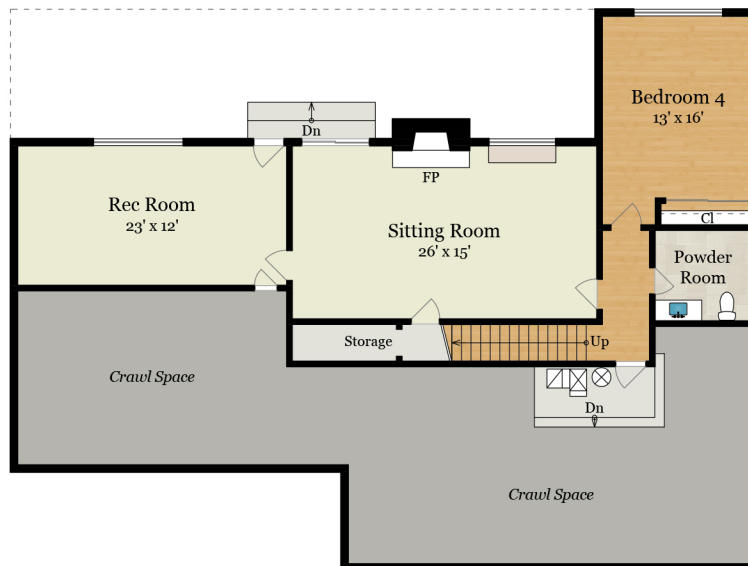


Estimated Total Finished Square Footage: 3,775 SQ FT

Above-Grade: 2,565 SQ FT Below-Grade: 1,210 SQ FT
Plus 585 SQ FT 2-Car Garage on Main Level
Plus 45 SQ FT Storage on Lower Level
Plus 60 SQ FT Mech on Lower Level
Calculated per ANSI Standard Z765-2003.

* Estimated Total Finished & Unfinished Square Footage: 4,465 SQ FT

*Per TAX Records: 2,490 SQ FT



LOWER LEVEL

1,210 SQ FT

