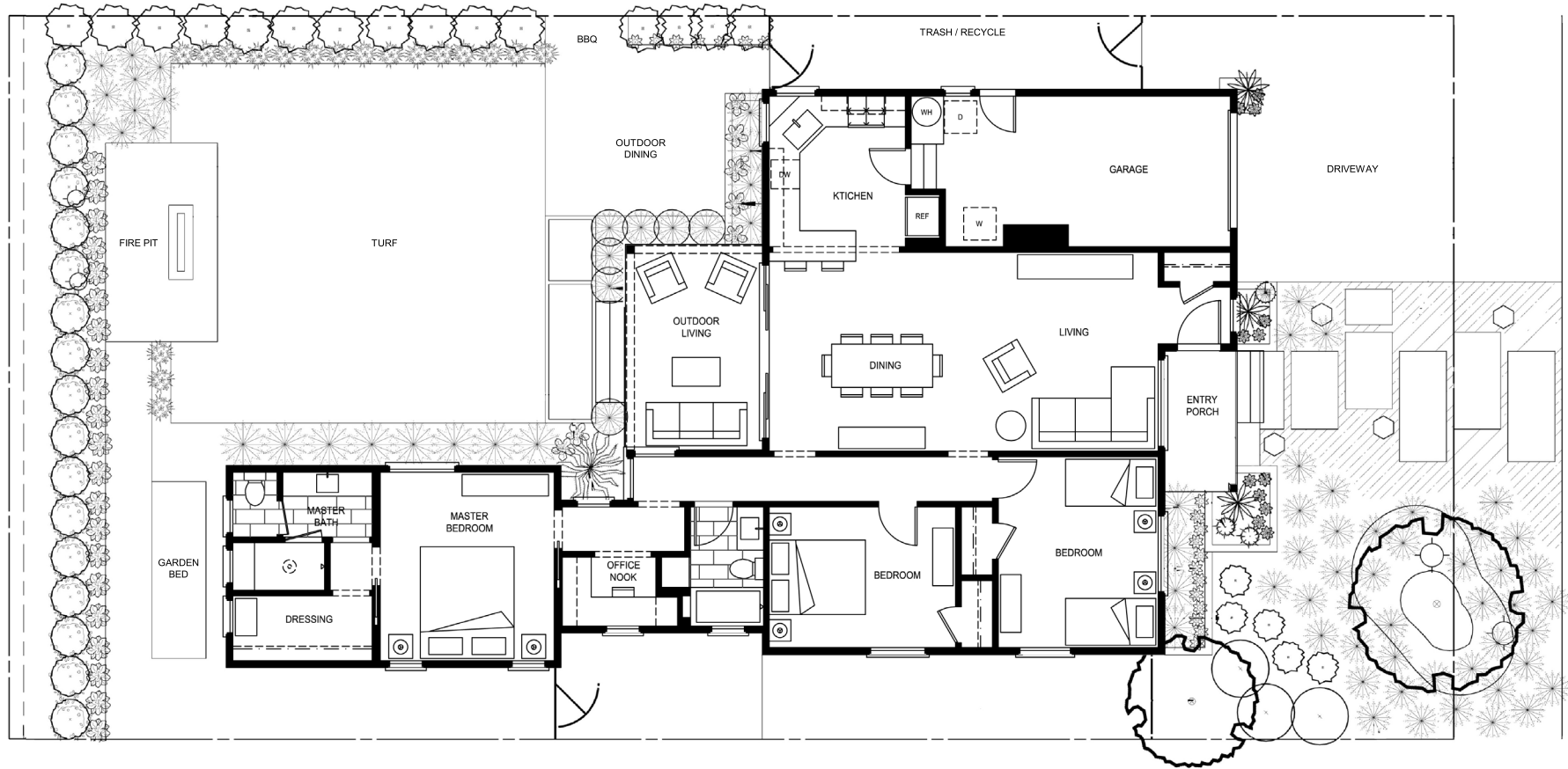


119 N. ROCHESTER STREET, SAN MATEO

3 BEDROOMS | 2 BATHROOMS | HOME SIZE : 1,430 S/F | LOT SIZE : 5,000 S/F PER COUNTY RECORDS



PRESENTED BY RAZIEL UNGAR

1290 Howard Ave, Ste 201 | Burlingame, CA 94010 | 650.822.7088 | Raziel@BurlingameProperties.com | BurlingameProperties.com



COMPASS

License #01701234

The information contained herein has been provided by various sources which may include the seller, public records, multiple listing service, or others. Compass has not verified or investigated the accuracy of this information. Prospective buyers are advised to conduct their own investigation of the property and the information contained herein, utilizing licensed professionals where appropriate, before purchasing this property. If your home is currently listed for sale, this is not a solicitation. Compass License # 01866771