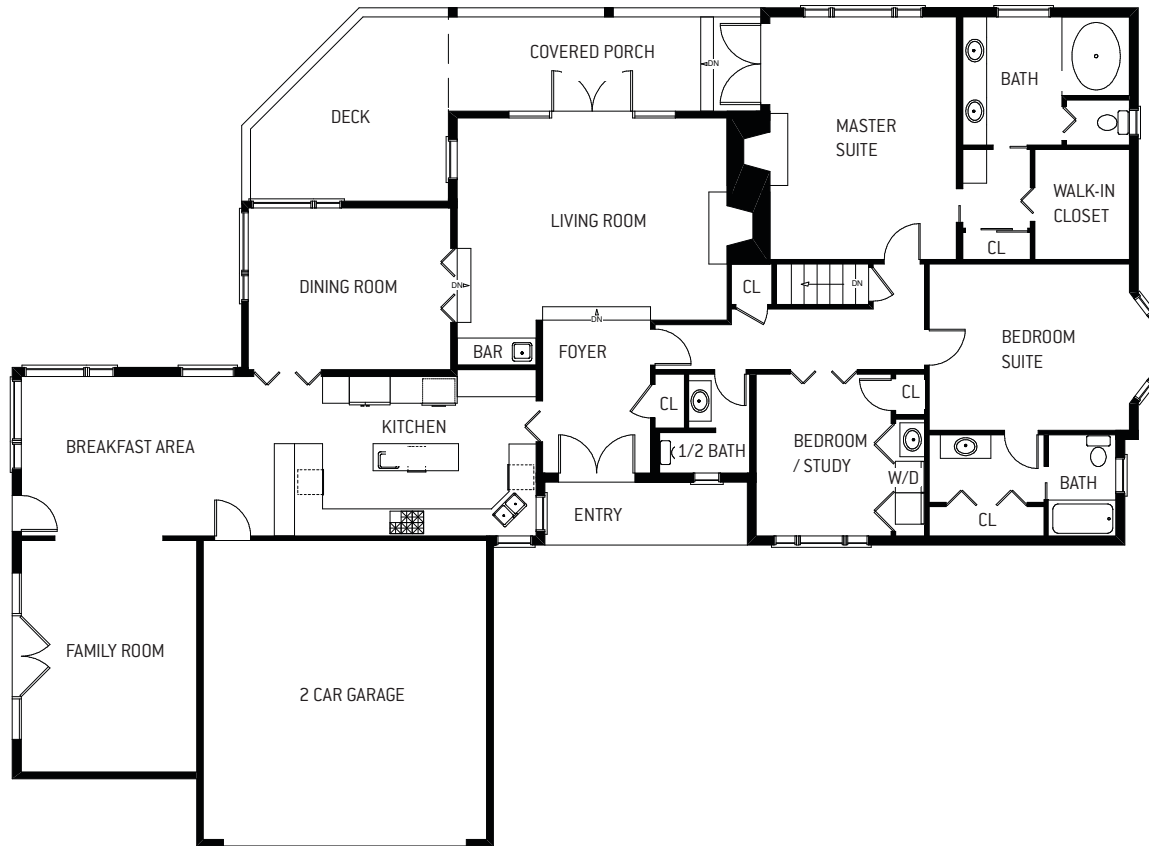


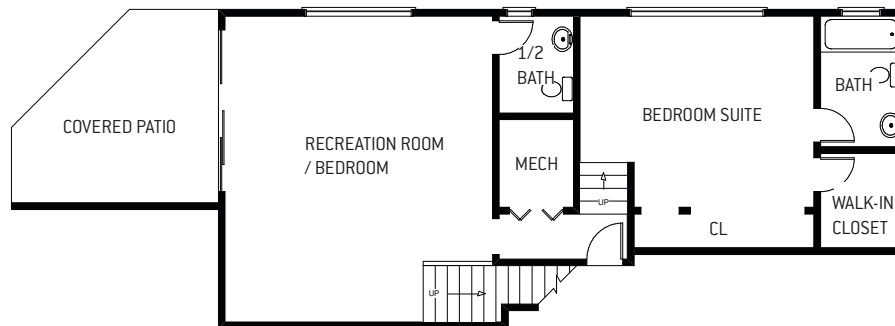
FLOOR PLAN FOR  
**170 Woodridge Road, Hillsborough**

PRESENTED BY **RAZIEL UNGAR**, REALTOR

**MAIN LEVEL**



**LOWER LEVEL**



4 BEDROOMS\*\*, 3 FULL BATHS\*\*, 2 HALF BATHS\*\* | HOME SIZE: 3,570 S/F\* | LOT SIZE: 51,793 S/F\*

\*per county records \*\*per seller



License # 01701234

**PACIFIC UNION**  
INTERNATIONAL

The information contained herein has been provided by various sources which may include the seller, public records, multiple listing service, or others. Pacific Union has not verified or investigated the accuracy of this information. Prospective buyers are advised to conduct their own investigation of the property and the information contained herein, utilizing licensed professionals where appropriate, before purchasing this property. If your home is currently listed for sale, this is not a solicitation. Pacific Union License # 01866771