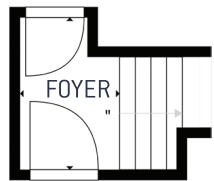


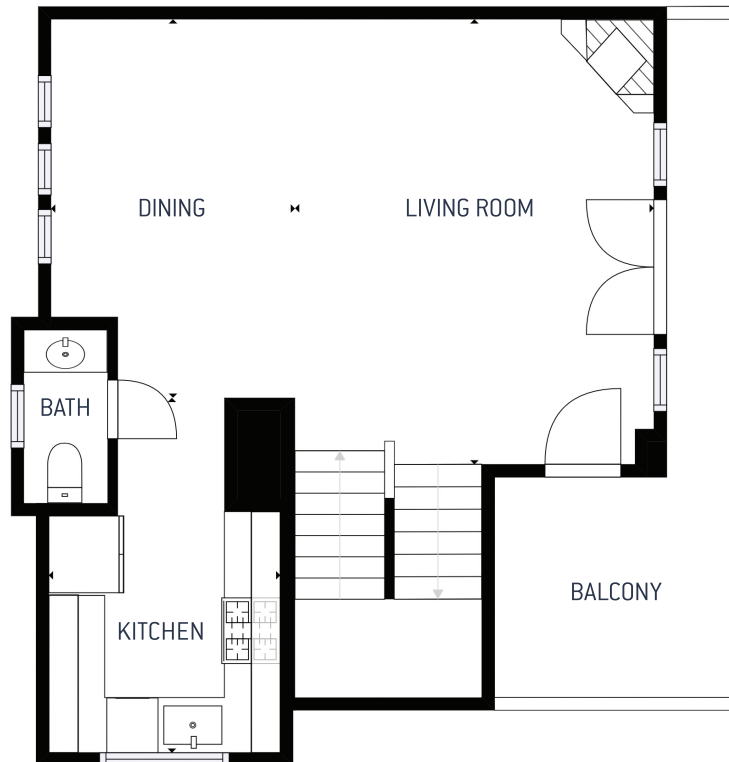
FLOOR PLAN FOR
1137 Paloma Avenue, Unit J, Burlingame

PRESENTED BY **RAZIEL UNGAR**, REALTOR

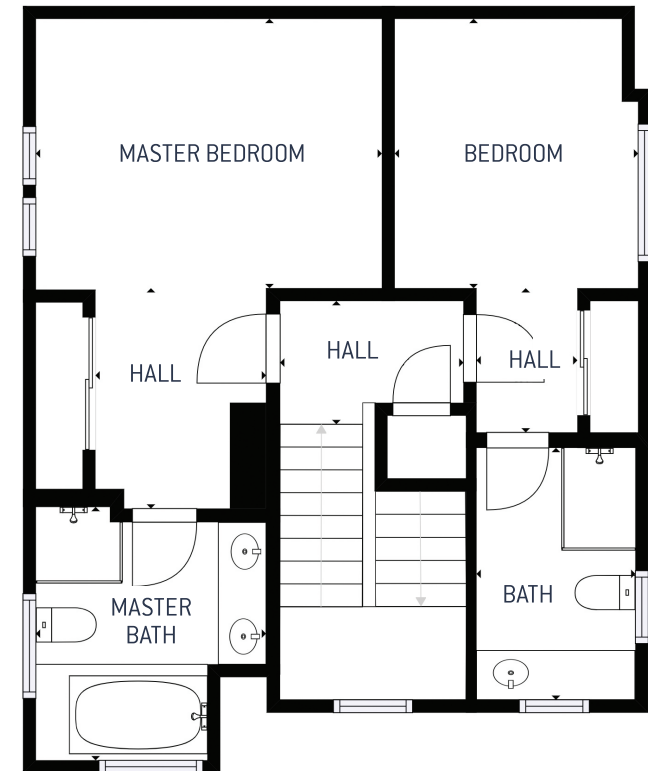
LOWER LEVEL



MAIN LEVEL



UPPER LEVEL



2 BEDROOMS, 2.5 BATHS | HOME SIZE: 1,286 S/F

per county records



License # 01701234

COMPASS

The information contained herein has been provided by various sources which may include the seller, public records, multiple listing service, or others. Compass has not verified or investigated the accuracy of this information. Prospective buyers are advised to conduct their own investigation of the property and the information contained herein, utilizing licensed professionals where appropriate, before purchasing this property. If your home is currently listed for sale, this is not a solicitation. Compass License # 01866771