

# 1609 QUESADA WAY

BURLINGAME, CA 94010



## MAIN LEVEL

1,750 SQ FT

## Estimated Total Finished Square Footage: 1,750 SQ FT

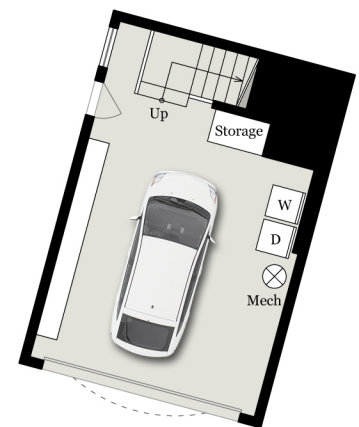
Above-Grade: 1,750 SQ FT Below-Grade: N/A

Plus 400 SQ FT Garage Level

Calculated per ANSI Standard Z765-2003.

\* Estimated Total Finished & Unfinished Square Footage: 2,150 SQ FT

\*Per Tax Records: 1,660 SQ FT



## GARAGE LEVEL

(Below Primary Bedroom)

400 SQ FT

