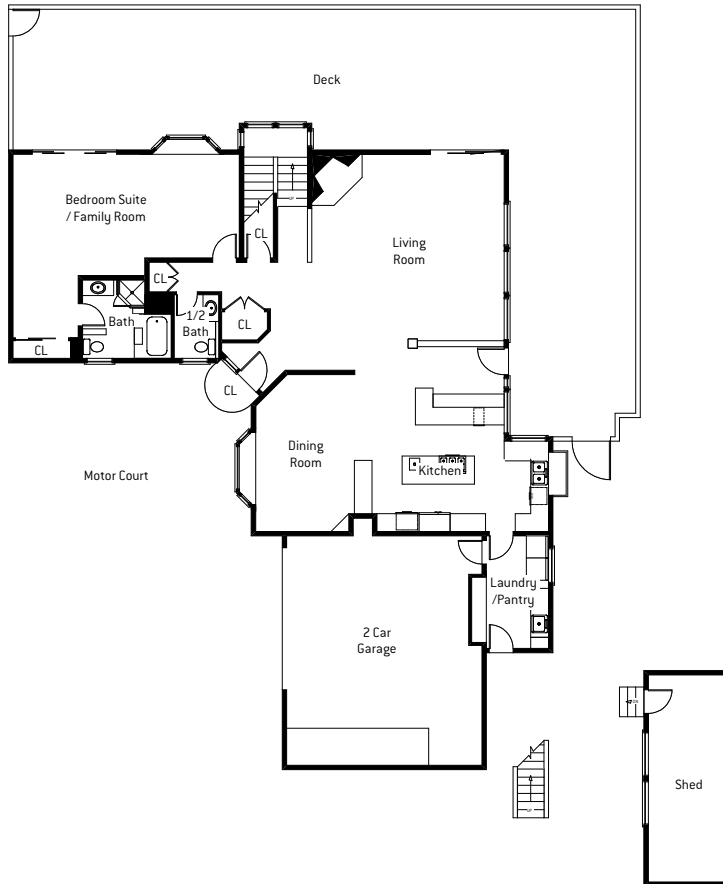


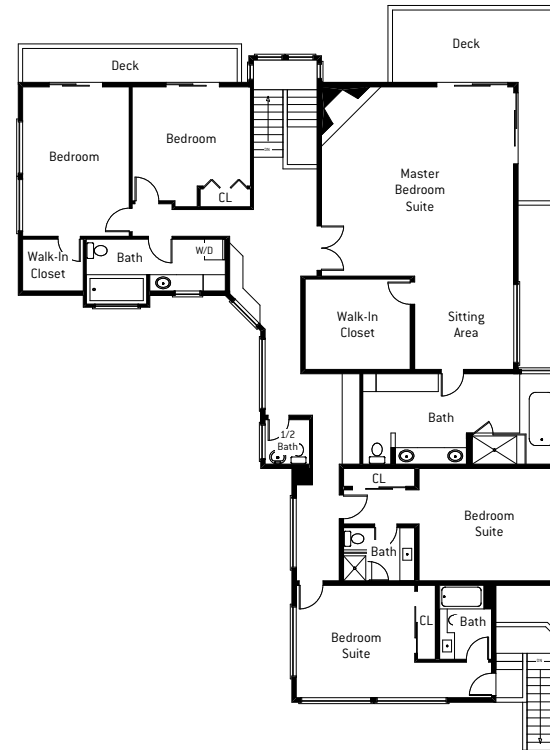
FLOOR PLAN FOR
2930 Adeline Drive, Burlingame

PRESENTED BY **RAZIEL UNGAR**, REALTOR

MAIN LEVEL



UPPER LEVEL



6 BEDROOMS, 7 BATHS* | HOME SIZE: 4,775 S/F* | LOT SIZE: 51,750 S/F*

*per county records



BRE # 01701234



The information contained herein has been provided by various sources which may include the seller, public records, multiple listing service, or others. Pacific Union has not verified or investigated the accuracy of this information. Prospective buyers are advised to conduct their own investigation of the property and the information contained herein, utilizing licensed professionals where appropriate, before purchasing this property. If your home is currently listed for sale, this is not a solicitation. Pacific Union CalBRE 01866771